

## PACKAGE CONTENTS

- Charging stand
- Detachable base
- Battery packs (2)
- Battery compartment covers (2)
- AC power adapter
- *Quick Start Guide*

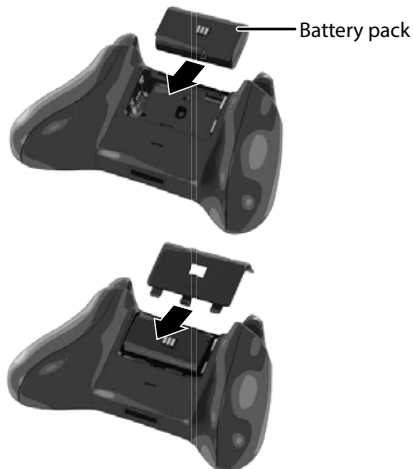
## FEATURES

- Drop and charge without removing batteries
- LED lights to indicate charge status
- Charges two controllers simultaneously
- Compact design also provides convenient storage for your controllers

## INSTALLING THE RECHARGEABLE BATTERY PACK

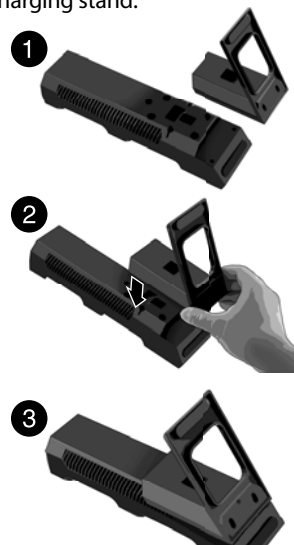
**Note:** To maximize battery life and capacity, you should fully charge the controller battery after you install it the first time.

- 1 Remove any silicon skin or jacket from your Xbox controller in order to access the battery compartment.
- 2 Remove the old battery compartment cover from the controller, then remove the battery from the compartment.
- 3 Insert the battery pack into the battery compartment, front end first, then press it into place.
- 4 Install the new battery compartment cover on the back of the Xbox controller.



## ATTACHING THE AC POWER ADAPTER

- 1 Install the detachable base onto the bottom of the charging stand.



- 2 Insert the DC power connector into the DC In jack underneath the recharging station.
- 3 Connect the AC power adapter to a standard AC power outlet.



## RECHARGING YOUR XBOX CONTROLLERS

Remove any jacket or silicon skins from your Xbox controllers to permit charging. Make sure that the controller is facing forward.

- When there are no controllers on the charging dock, the indicator lights are off.
- When one controller is charging, a single indicator light will be green. When two controllers are charging, both indicator lights will be green. The top indicator light corresponds to the top controller charging position, while the bottom indicator light corresponds to the bottom controller charging position.
- After a controller has finished charging, its corresponding indicator light turns off. With both controllers installed, charging time can take 3.5 hours.



## TROUBLESHOOTING

Before contacting technical support for help, check the following:

### If the controller doesn't work when using the battery pack:

- Re-install the battery pack. Make sure that it is locked in place.
- Use another charged battery pack to determine whether the controller is damaged or the battery pack's charge is low.
- Try to recharge the battery pack.
- Make sure that the surrounding temperature is between 41° and 86°F (5°C - 30°C)

### If the recharging station doesn't charge the controllers:

- Make sure that the battery pack is correctly installed in the Xbox controller.
- Make sure that you have connected the AC power adapter to the recharging station and an AC power outlet.

- If the battery pack has been stored and/or unused for a long time, it may have become over-discharged. The recharging station may not be able to recover the battery.
- Make sure that the surrounding temperature is between 41° and 86°F (5°C - 30°C).

### If battery life seems short and charging takes a long time:

- Make sure that the surrounding temperature is between 41° and 86°F (5°C - 30°C).
- Battery life may decrease over time. After 500 recharges, battery life may be only 70% of the battery life when new.

## LEGAL NOTICES

### FCC Statement

This device complies with Part 15 of the FCC Rules. Operation is subject to the following two conditions: (1) this device may not cause harmful interference, and (2) this device must accept any interference received, including interference that may cause undesired operation. This equipment has been tested and found to comply with the limits for a Class B digital device, pursuant to Part 15 of the FCC Rules. These limits are designed to provide reasonable protection against harmful interference in a residential installation. This equipment generates, uses and can radiate radio frequency energy and, if not installed and used in accordance with the instructions, may cause harmful interference to radio communications. However, there is no guarantee that interference will not occur in a particular installation. If this equipment does cause harmful interference to radio or television reception, which can be determined by turning the equipment off and on, the user is encouraged to try to correct the interference by one or more of the following measures:

- Reorient or relocate the receiving antenna.
- Increase the separation between the equipment and receiver.
- Connect the equipment into an outlet on a circuit different from that to which the receiver is connected.
- Consult the dealer or an experienced radio/TV technician for help.

**FCC Warning:** Changes or modifications not expressly approved by the party responsible for compliance could void the user's authority to operate the equipment.

### Canada ICES-003

This Class B digital apparatus complies with Canadian ICES-003.

Cet appareil numérique de la classe B est conforme à la norme NMB-003 du Canada

## ONE-YEAR LIMITED WARRANTY

For complete warranty, visit [www.insigniaproducts.com](http://www.insigniaproducts.com).

## CONTACT INSIGNIA

For customer service, call 1-877-467-4289 (U.S. and Canada)

[www.insigniaproducts.com](http://www.insigniaproducts.com)

All cited trademarks and logos are properties of their respective holders and these respective holders have not sponsored, endorsed or approved this product.

Xbox is a registered trademark of the Microsoft group of companies.

INSIGNIA is a trademark of Best Buy and its affiliated companies.

Registered in some countries.

Distributed by Best Buy Purchasing, LLC

7601 Penn Ave South, Richfield, MN 55423 U.S.A.

©2014 Best Buy. All rights reserved.

Made in China